

Slimwall™ Rainscreen System



Non-Combustible CWCT-Tested Flat Panel System





APL Slimwall™

Non-combustible flat panel and rainscreen system

Slimwall™ is a non-combustible bi-modular panel system manufactured in Aluminium, Steel or Corten and used either as a rainscreen or as a complete flat panel insulated assembly.

It allows for fully systemised detailing - with a variety of recessed and flush joint options being available - to allow complete integration of flush or recessed windows, doors and louvres.

- CWCT-Tested
- Bespoke design and manufacture to suit most projects.
- Available in Steel, Aluminium and Corten
- Different joint types provide aesthetic and price options.
- Can be installed as part of the non-combustible APL EcoClad™ Energi Systems.
- A huge range of panel sizes possible.





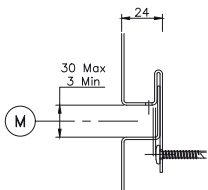
- Bespoke design and manufacture to suit your project
- Available in Aluminium, Steel, Al or A2 ACM and Cor-ten
- A1 fire-rated materials available
- Available in PPC, Armacoil™ HDP, Armacoil™ HDP-HT, Anodised & APL PUF
- Secret-fix options available depending on module size
- Up to 25 year warranty available on both the coating and the substrate, including for marine environments
- Available as a fire-resistance rated insulated system assembly when combined with APL Tritherm™ Spacer System, with simple system upgrades for improved fire resistance performance

- Only the most economic material thickness to achieve true flatness of the panel is selected
- Available curved, perforated and dished - bespoke designs available
- Joints sizes from 3mm to 20mm
- Available in face widths up to 1100mm and lengths up to 6m
- Can be laid both horizontally and vertically
- System constructions available onto APL StrongBak™, cladding rails, SFS and blockwork

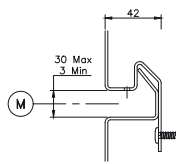




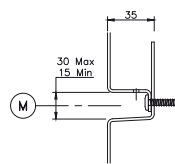
SFP24



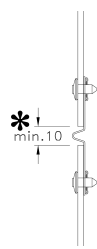
SFP42



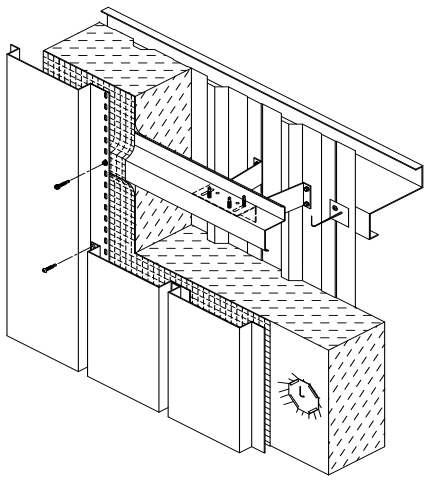
CPS/SSF



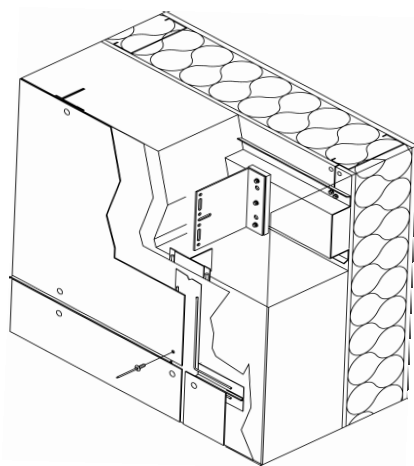
FF



**Typical non-combustible APL
Slimwall Vertical Assembly onto SFS**



**Typical non-combustible APL
Slimwall FF Assembly onto SFS**



Who are Architectural Profiles?



- Specialists in complete NON-COMBUSTIBLE “through-wall” and “through-roof” systems
- Established for nearly 40 years
- All systems and constructions fire-tested
- Specified by the UK’s leading Architects and Designers
- Chosen by the UK’s leading contractors and installers
- Provider of Cladshield - a 25-year fully-installed system warranty
- 55,000 sqft UK manufacturing facility
- Established members of the MCRMA & CWCT
- ISO:9001 & ISO:14001 registered

CUSTOM BESPOKE PANELS & PROFILES • STRONGBAK • MINERAL WOOL COMPOSITE ROOF & WALL PANELS
 LOUVRE PROFILE & LIVE LOUVRES • RAINSCREEN & FLAT PANELS • WALL & ROOF PROFILES • APL SNAPLOC
 & STANDING SEAM • SOFFITS • ARCHITECTURAL FLASHINGS • FLAT ROOF STRUCTURAL DECKINGS



Non-combustible system



25 year fully installed system warranty



Tel: 0118 927 2424 | Email: info@archprof.co.uk | www.archprof.co.uk

Architectural Profiles Limited 53 Crockhamwell Road, Woodley, Reading, Berkshire, RG5 3JP

All systems and products are subject to change. Terms and Conditions available upon request. v4

Established
35 years, all
manufactured
by us in the UK,
and proud of it!

